



How energy intensive is your school district?

Compare with others in British Columbia

7TH ANNUAL PUMA **BENCHMARKING SUMMARY**

For BC School Districts: 2019 Calendar Year

PUMA[™]

PUMA Utility Monitoring Inc.

Scope

The sites included in the benchmarks are from the following BC School Districts that subscribed to monthly PUMA utility monitoring software & services during the calendar year 2019.

COASTAL



INTERIOR & NORTH



About PUMA

PUMA comprises a combination of software and services from PUMA Utility Monitoring that track over 15,000 electrical, natural gas, water, and other fuel accounts for government, commercial, and institutional customers. Since launching online in 2009, more and more organizations have enlisted PUMA to help track and analyze building energy use.

PUMA is currently used by over 20 Energy Managers, and more than 50 organizations across Canada. Our utility tracking software and services save time and money for owners of multiple properties by turning data into actionable information.

About this Report

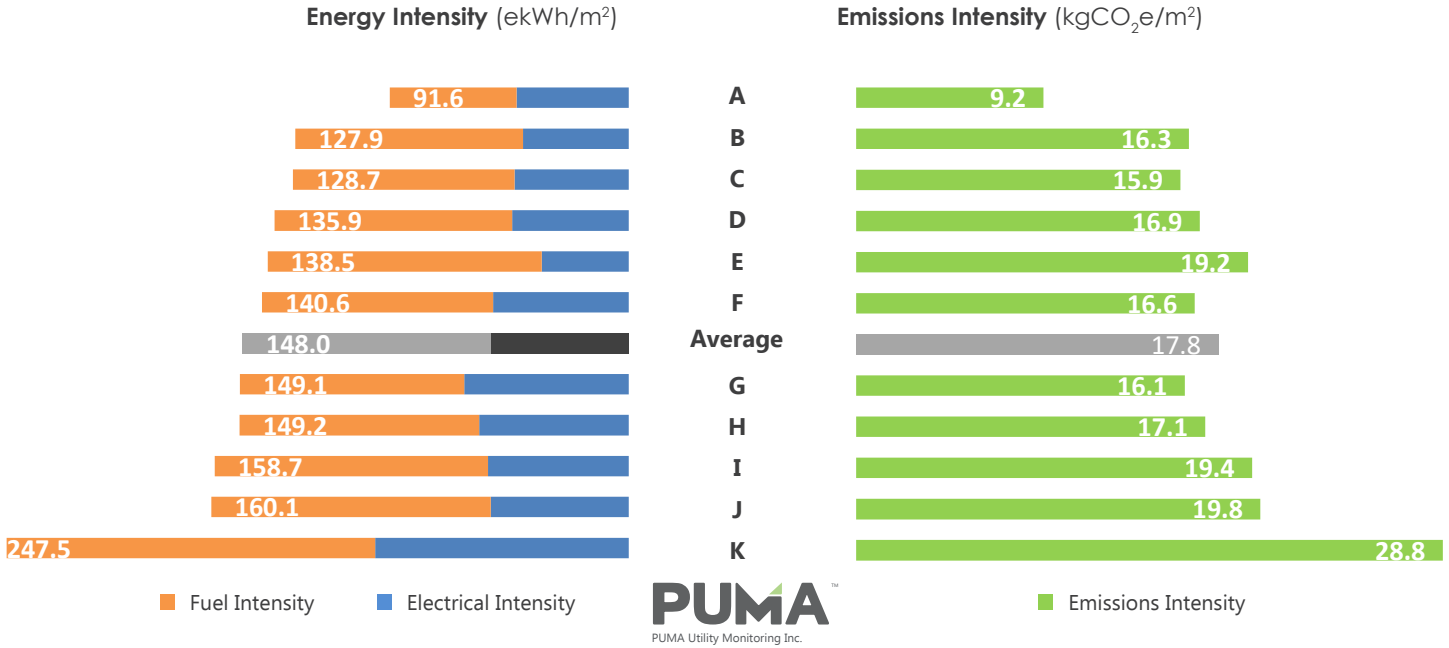
Each year the PUMA team puts together a benchmarking report for school districts, advanced education and municipalities. Based on compiled data from PUMA, this report enables the comparison of similar sites across each sector.

www.pumautilitymonitoring.ca

How energy intensive is your school district?

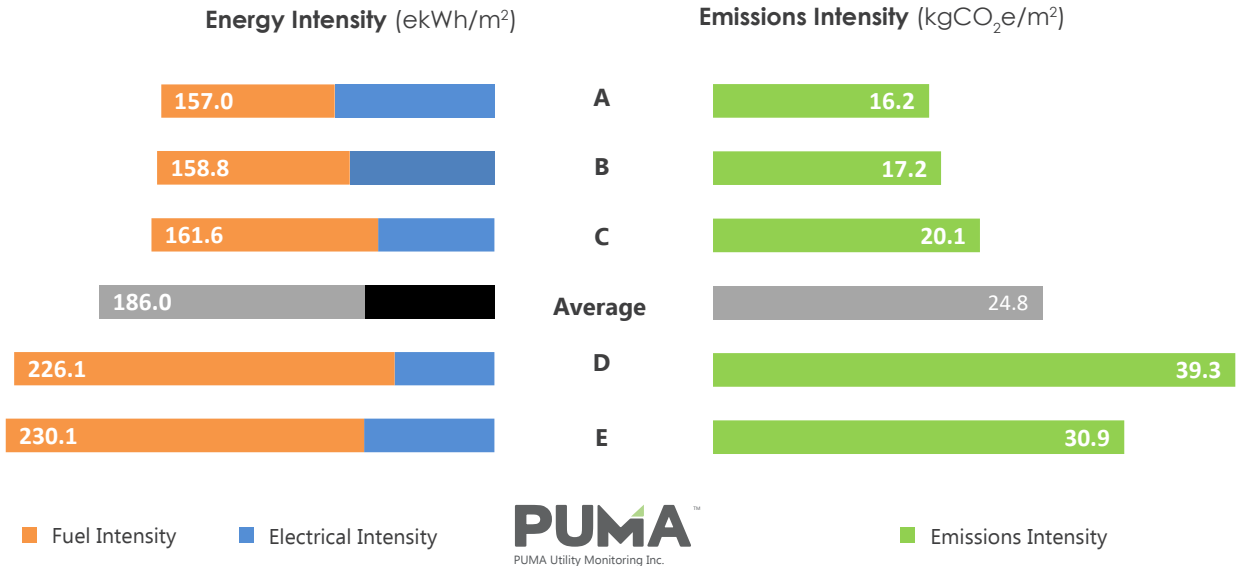
Coastal BC School Districts

Calendar Year 2019 | 11 School Districts



Interior & Northern BC School Districts

Calendar Year 2019 | 5 School Districts



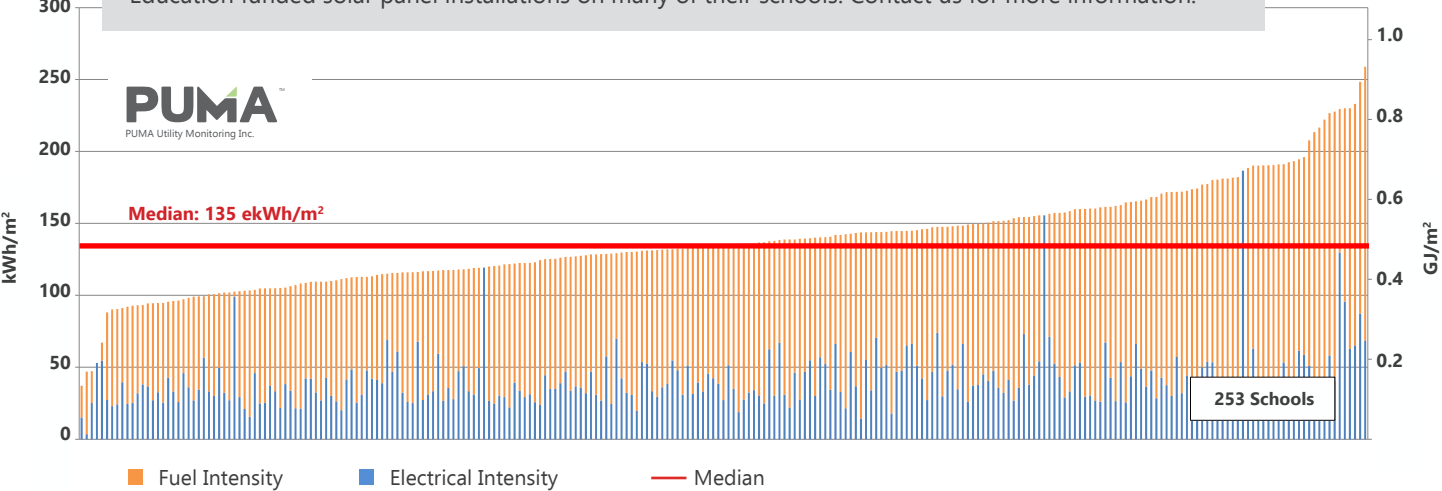
Districts are grouped into similar climatic zones. Energy Use Intensity (EUI) allows sites of different sizes to be compared.

Are your **elementary schools** better or worse compared to other schools in BC?

Coastal BC Elementary Schools EUI Calendar Year 2019

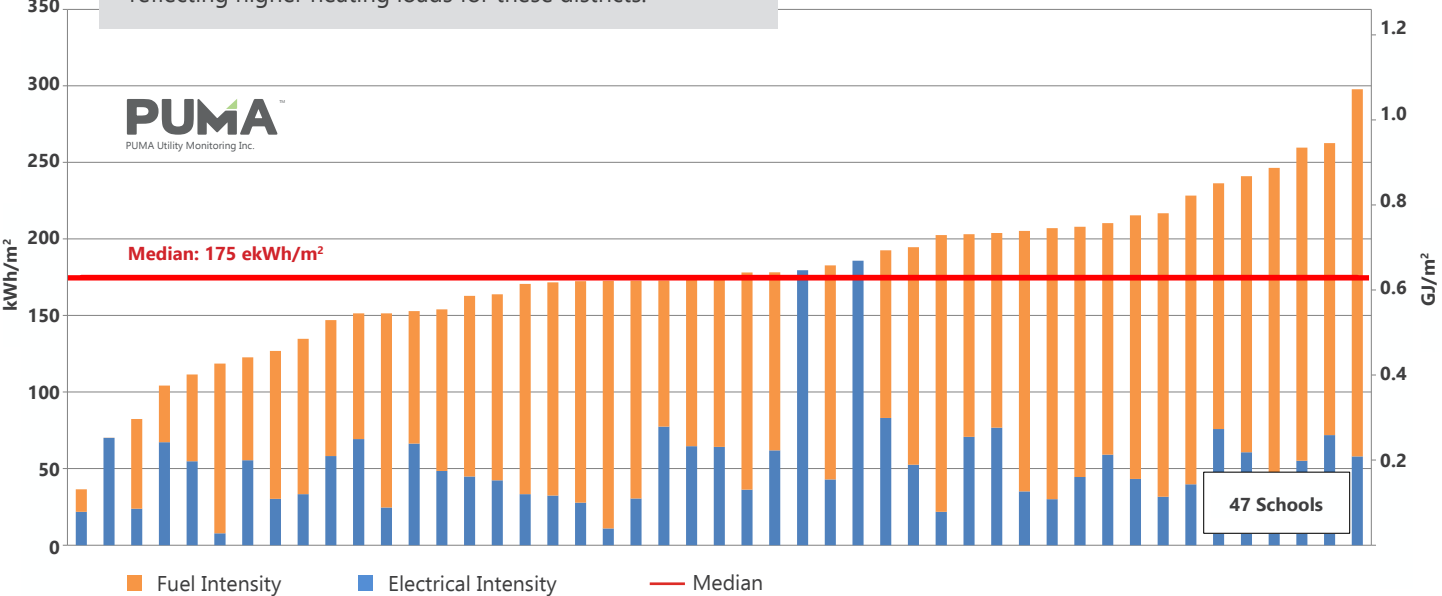
Energy Consumption for the 10 best performing schools were less than a third that of the 10 worst performing schools (70 ekWh/m² vs 232 ekWh/m²).

SD#46 shows that low EUI is possible with a combination of efficient operation and Ministry of Education funded solar panel installations on many of their schools. Contact us for more information.



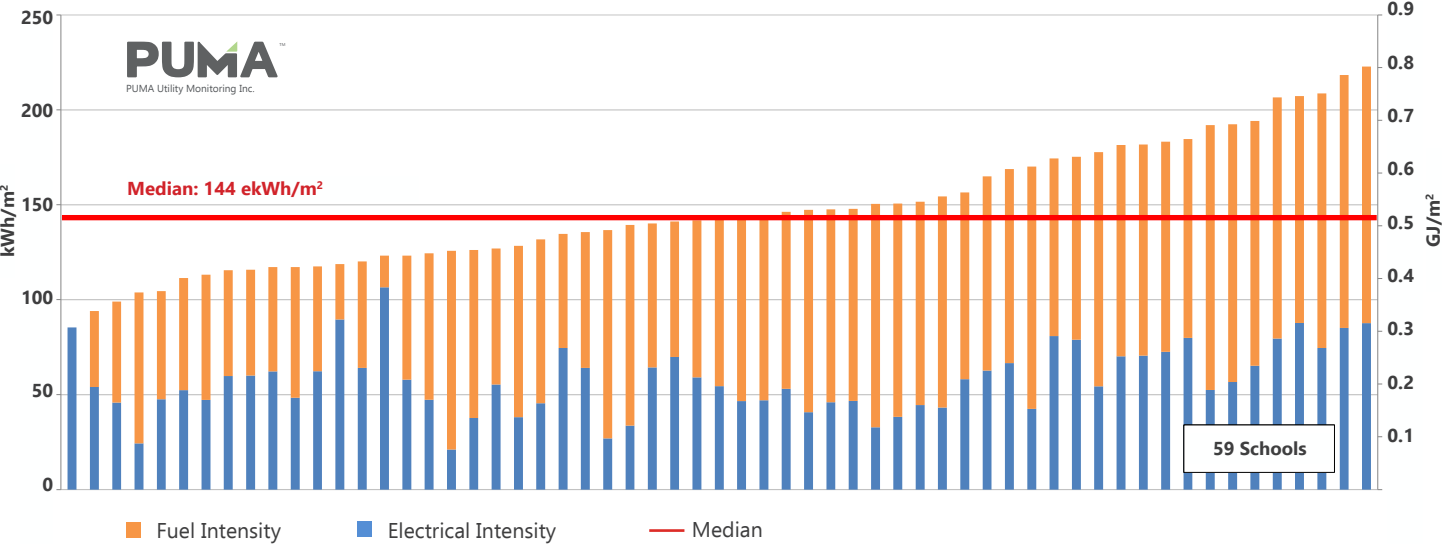
Interior & Northern BC Elementary Schools EUI Calendar Year 2019

Median Energy use is 30% higher on this group of schools, reflecting higher heating loads for these districts.

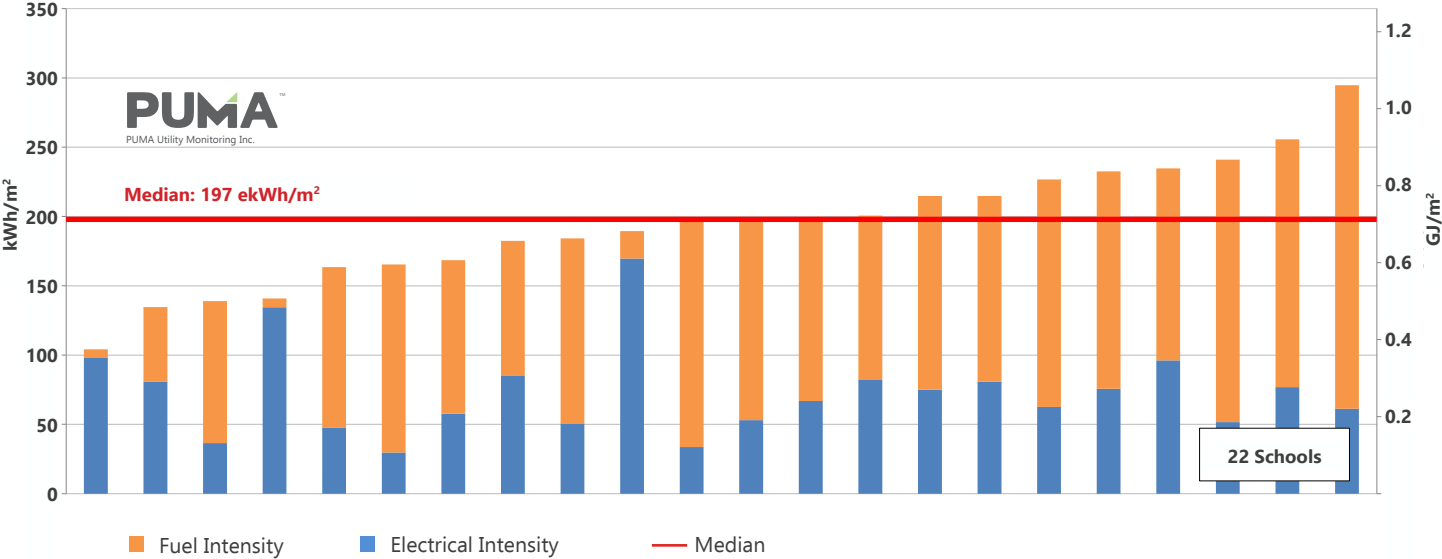


Are your **secondary schools** better or worse compared to other schools in BC?

Coastal Secondary Schools EUI Calendar Year 2019



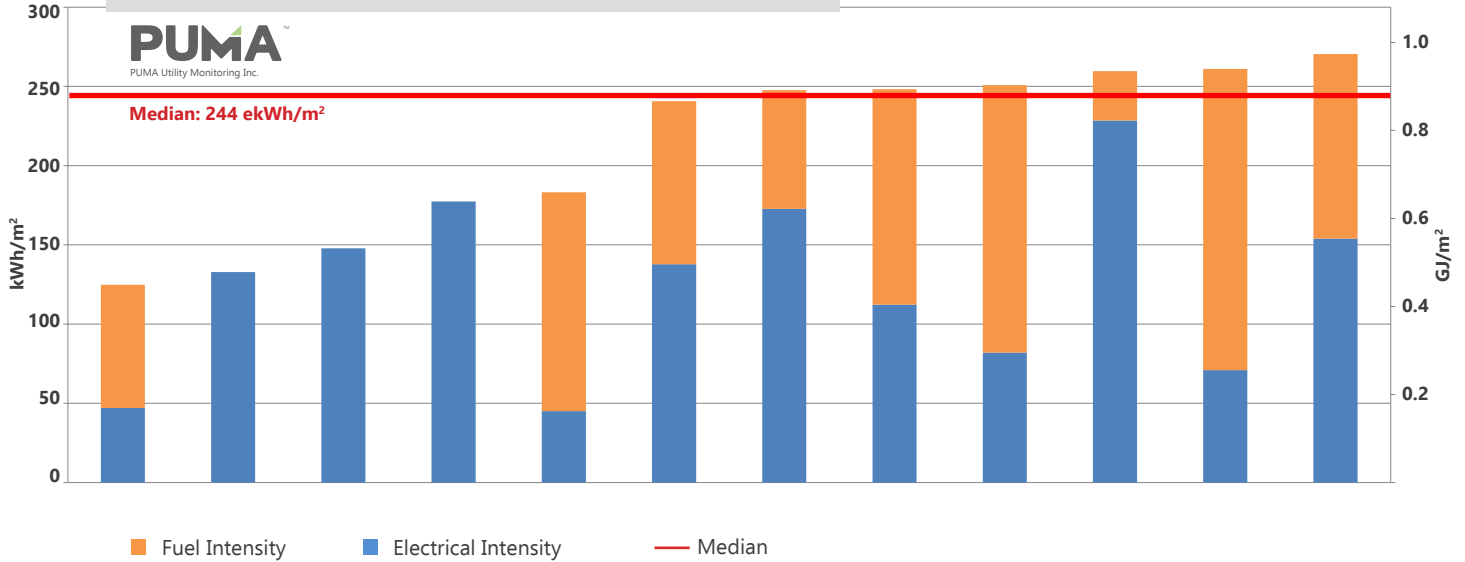
Interior & Northern BC Secondary Schools EUI Calendar Year 2019



Are your **board offices** better or worse compared to others in BC?

Coastal Board Offices EUI Calendar Year 2019

Board offices median is 244 ekWh/m², which is 70% more energy intensive than secondary schools at 144 ekWh/m².



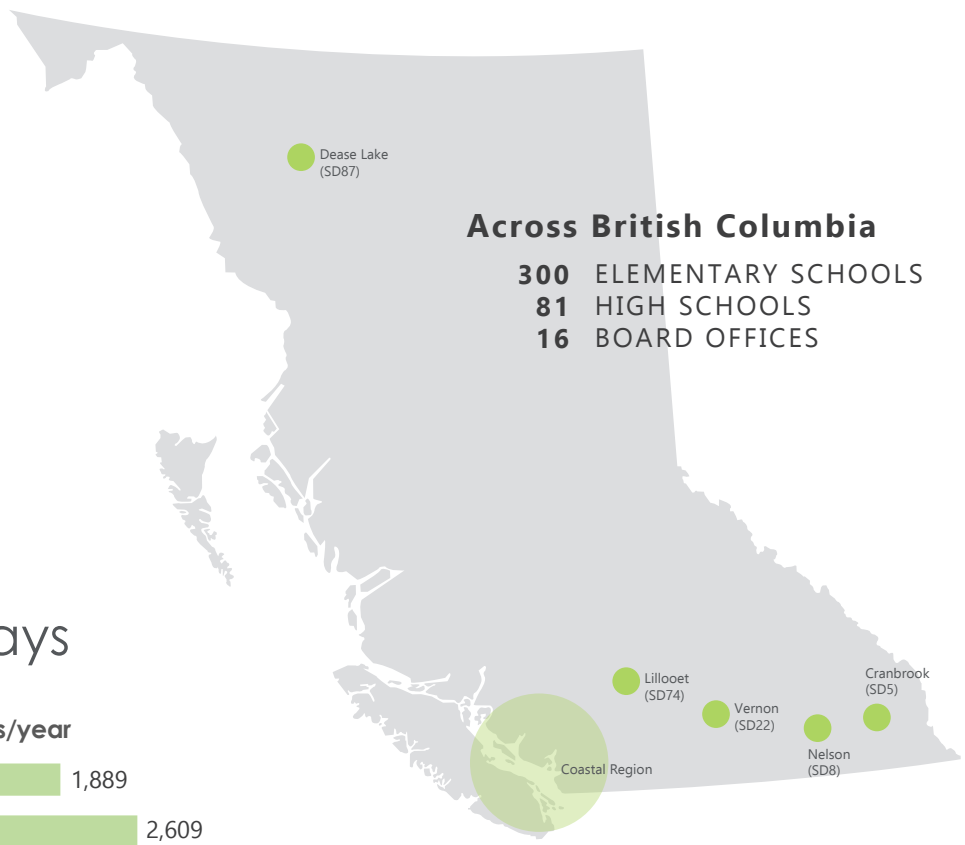
Summary

COASTAL

School District Building Type	Median Energy Use per m ² (EUI)	Number in sample
Elementary	135 ekWh/m²	253 buildings
Secondary	144 ekWh/m²	59 buildings
Board Offices	244 ekWh/m²	12 buildings
Overall District Average	148 ekWh/m²	11 districts

INTERIOR & NORTH

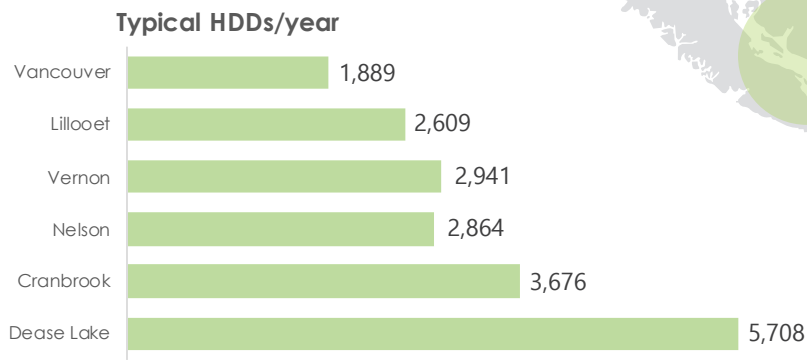
School District Building Type	Median Energy Use per m ² (EUI)	Number in sample
Elementary	175 ekWh/m²	47 buildings
Secondary	197 ekWh/m²	22 buildings
Overall District Average	186 ekWh/m²	5 districts



Across British Columbia

- 300** ELEMENTARY SCHOOLS
- 81** HIGH SCHOOLS
- 16** BOARD OFFICES

Heating Degree Days



PUMA Utility Monitoring Inc.


PUMA is an affordable and effective way to compare the performance of all the buildings in your portfolio, including the ability to normalize for weather.

www.pumautilitymonitoring.ca

Contact Rob Kraft to schedule a free demo:

E: robk@pumautilitymonitoring.ca

T: 604.205.5507

 @pumaprism

 @puma-utility-monitoring